

commercial TC PTT LTD
 Drawn By : Steven Stefanofski
 Licence Num: TCT0104283

DATE: 28/08/2024
LOCATION: BUILD CORP - KENT ST
CUSTOMER: HOARDING COMPOUND
TGS No 02

NAME: Steven sStefanofski
License No: TCT0104283

THIS TRAFFIC GUIDANCE SCHEME IS BASED ON THE NSW RITE TCAMS MANUAL V6.1 AS REVISED 2019 BY THE NSW ON SITE AT APPROVALS - ALL TIMES. Traffic Guidance Scheme has been prepared in accordance with AS1742.3-2019 on Roads, Road Management Act 2004 Code of Practice Traffic Management 2010 & the TNSW Roads and Traffic Control Work Sites (TCAMS) Manual V6.1

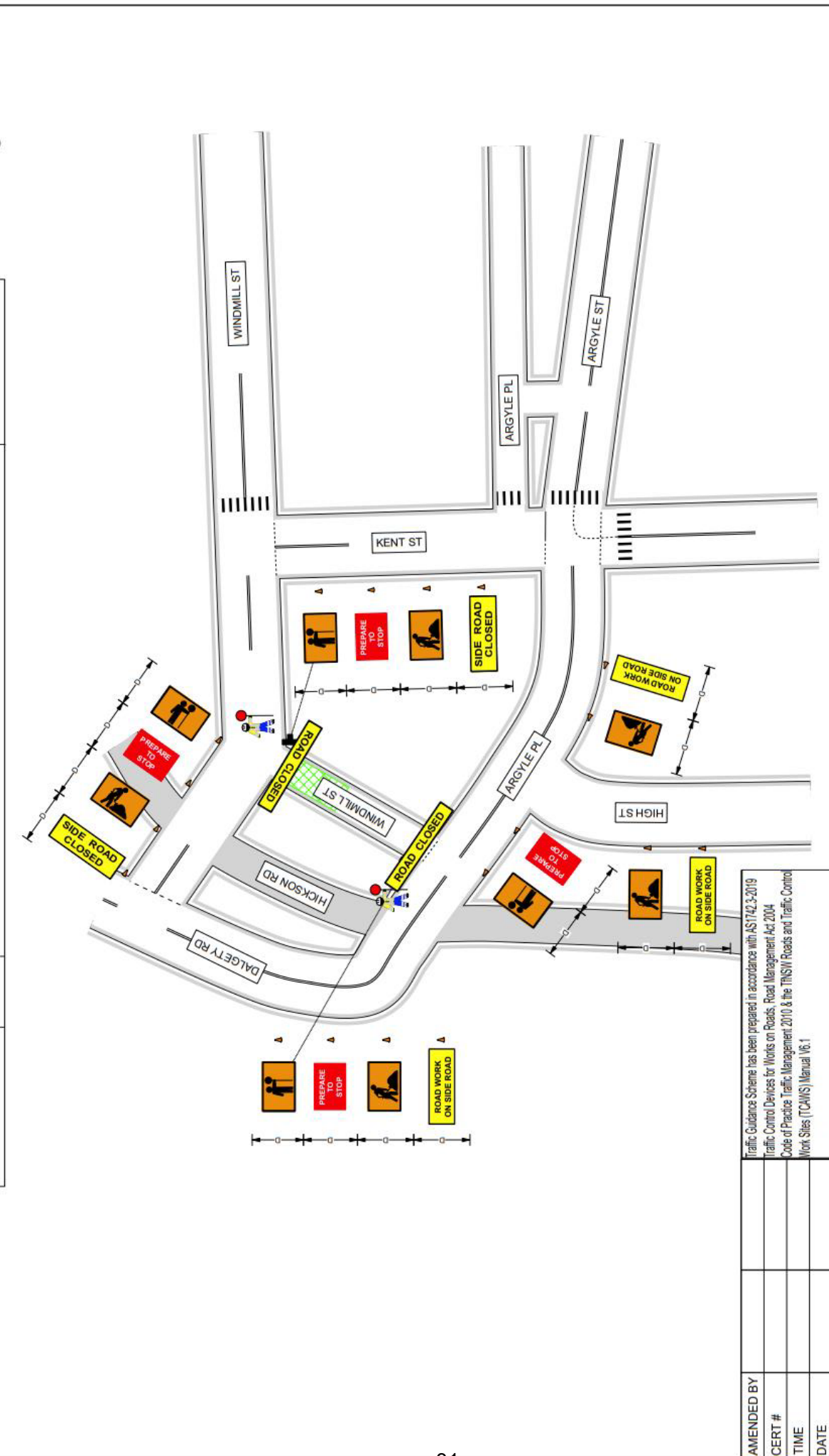


TABLE 4.2

VALUE OF DIMENSION D	
Speed of traffic km/h	Dimension D m
45 or less	0 to 5
46 to 55	15
56 to 65	45
Greater than 65	Equal to speed of traffic, in km/h

Amended By:
CERT #:
TIME:
DATE:

Date: 28/08/2024 Author: Steven Stefanofski Project: 1 KENT ST, SYDNEY
 Commercial TCAMS Manual V6.1
 PWTMP: TCT0104283
 DRAWINGS MUST TO SCALE
 This document has been prepared solely as a guide only for traffic management purposes.
 Commercial TC disclaims all responsibility & all liability (including without limitation, liability in negligence) for all expenses, losses, damages & costs.
 Commercial TC does not accept any responsibility for compliance of this document if set up by others.
 All traffic control plans and traffic management plans are copyright and property of Commercial TC and is not transferable unless authorized by Commercial TC.
 Traffic Guidance Scheme has been prepared in accordance with AS1742.3-2019 Code of Practice Traffic Management 2010 & the TNSW Roads and Traffic Control Work Sites (TCAMS) Manual V6.1